

DUMPER GYRANTER 2.7

ROTARY TIPPING 180° 2700 kg

Hydraulic wheels motors



- Hydrostatic TWIN LOCK automotive 4x4
- Rotary tipping 180°
- Articulated chassis

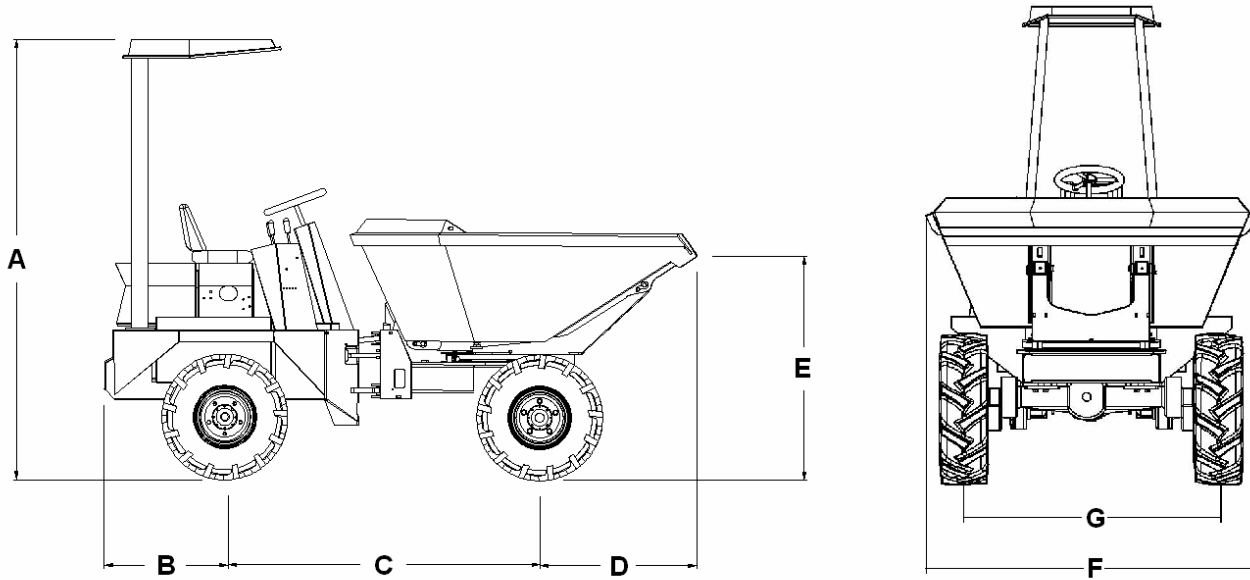
Type	Site dumper rotary tipping 180°
Payload	2700 kg
Engine	YANMAR 3TNV88-DSA
	Water cooled
	27,1 kW a 3000 rpm
Transmission	Hydrostatic TWIN LOCK automotive 4x4
Brakes	Hydrostatic
Steering	Hydraulic
Front wheels	10.0/75-15.3
Rear wheels	10.0/75-15.3
Unladen weight	2520 kg
Internal turning circle	2.4m
External turning circle	4.2m
Max. speed	20 km/h
Gradient negotiable	50% asphalt / 36 % earth

DUMPER GYRANTER 2.7

ROTARY TIPPING 180°



DIMENSIONS



A	2500 mm
B	1000 mm
C	1950 mm
D	800 mm
E	1400 mm
F	1750 mm
G	1490 mm

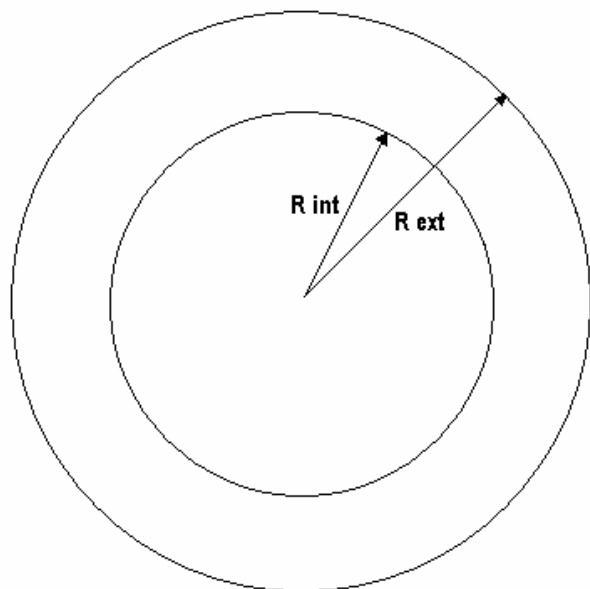


DUMPER GYRANTER 2.7

ROTARY TIPPING 180°

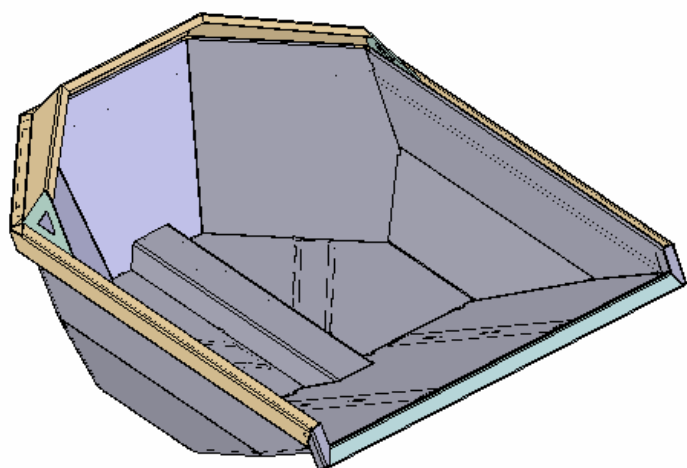


TURNING CIRCLE



External turning circle (m)	4,2
Internal turning circle (m)	2,4

HOPPER



CAPACITY	Water - 900 l
	Levelled - 1150 l
	Heaped - 1400 l
ROTARY TIPPING	180°



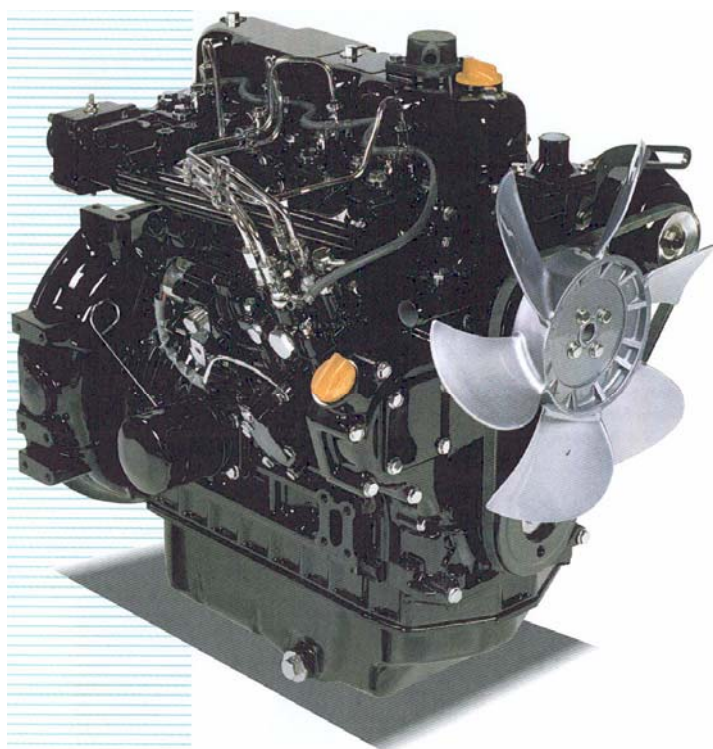
DUMPER GYRANTER 2.7

ROTARY TIPPING 180°



ENGINE

3TNV88-DSA



YANMAR

- Noise reduction
- Emission reduction
- Direct injection
- Water cooled

DIESEL ENGINES
TNV

Number of cylinders	3
Combustion type	Direct injection
Compression ratio	19:1
Displacement (cc)	1642
Power (kW)	27,1 a 3000 rpm
Cooling system	Water
Torque (Nm)	99 – 107.9
Weight (kg)	138
Starting system	Electric



DUMPER GYRANTER 2.7

ROTARY TIPPING 180°



HYDROSTATIC PUMP



Displacement	Nominal displacement (cm ³ / rev)	55
	Max. displacement (cm ³ / rev)	54.8
Speed	Max. continuous speed (rpm)	3300
	Max. alternative speed (rpm)	3700
Pressure	Max. continuous pressure (bar)	250
	Max. pressure of work (bar)	420
	Max. alternative pressure (bar)	500
Torque	Continuous input torque (Nm)	220
	Max. input torque (Nm)	350
Power	Continuous power (kW)	75
	Max. power (Kw)	121
Weight	Weight (Kg)	44

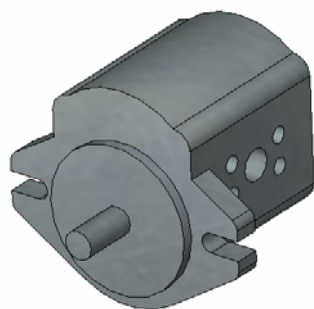


DUMPER GYRANTER 2.7

ROTARY TIPPING 180°



GEAR PUMP



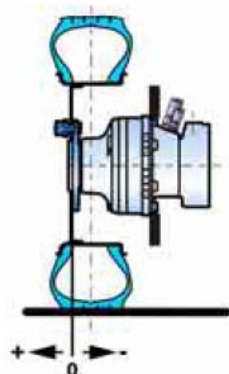
DYNAMATIC TECHNOLOGIES LIMITED

Displacement	10,9 cc/rev
Max. pressure	200 bar
Peak pressure	250 bar
Min. rpm	650 rpm
Average rpm	2500 rpm
Max. rpm	3500 rpm

HYDRAULIC ENGINE



Displacement (cm ³ /rev)	398
Torque (Nm)	633
Max. power (kW)	22
Max. speed (rev/min)	208
Max. pressure (bar)	400



C/ Arnao, 15 - Polígono Industrial de Barres
 33794 - Castropol - Asturias
 España
 Tlf: 985 471 063
 Fax: 985 472 709
www.uromac.com