

DUMPER GYRANTER 2.7

ROTARY TIPPING 180° 2700 kg



- Permanent 4 wheel drive
- Rotary tipping 180°
- Articulated chasis

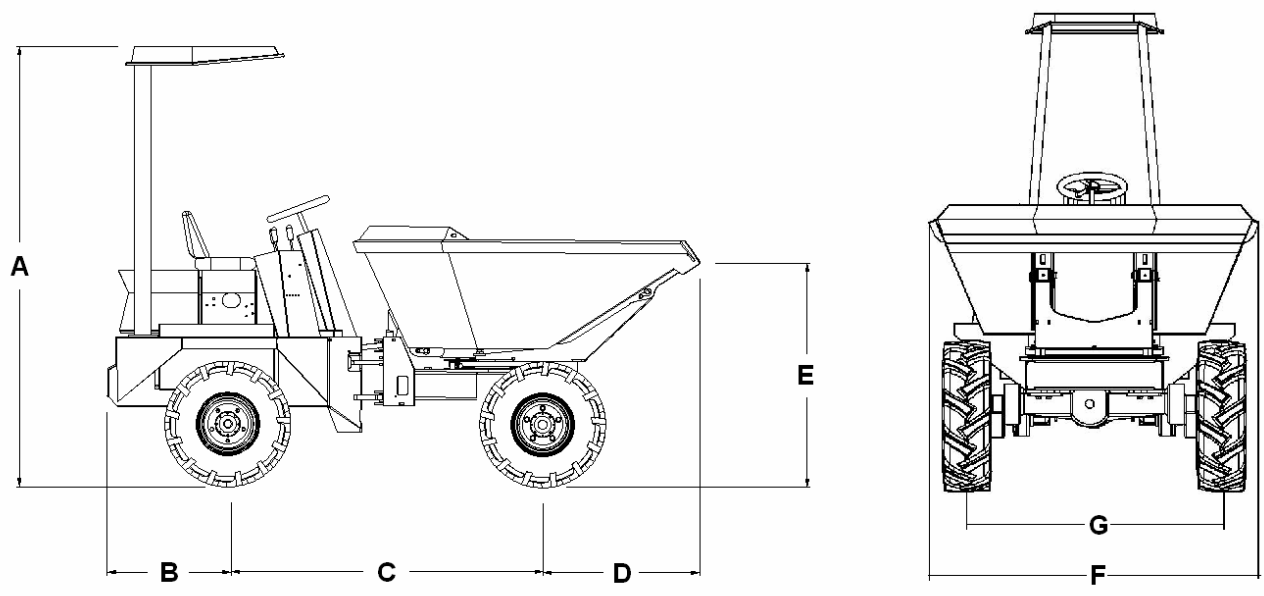
Type	Site dumper rotary tipping 180°
Payload	2700 kg
Engine	Yanmar 3TNV88-DSA
	Water cooled
	27,1 kW / 36,8 cv
Transmission	Hydrostatic automotive 4x4 permanent
Hydrostatic pump	HP hydraulic
Hydrostatic engine	HP hydraulic
Brakes	Hydraulic.Oil inmersed discs
Steering	Hydraulic
Front wheels	10.0 / 75 - 15.3
Rear wheels	10.0 / 75 - 15.3
Unladen weight	2400 Kg
Speed (Max.)	18 km/h
Internal turning circle	2.4 m
External turning circle	4.2 m

DUMPER GYRANTER 2.7

ROTARY TIPPING 180°



DIMENSIONS



A	2500 mm
B	1000 mm
C	1950 mm
D	800 mm
E	1400 mm
F	1750 mm
G	1490 mm

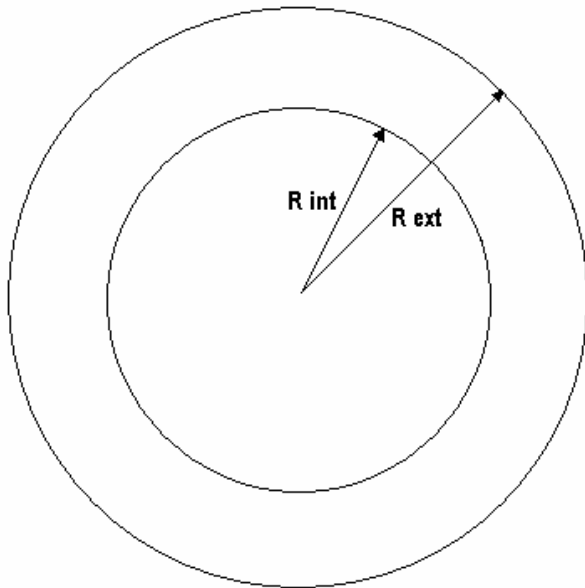


DUMPER GYRANTER 2.7

ROTARY TIPPING 180°

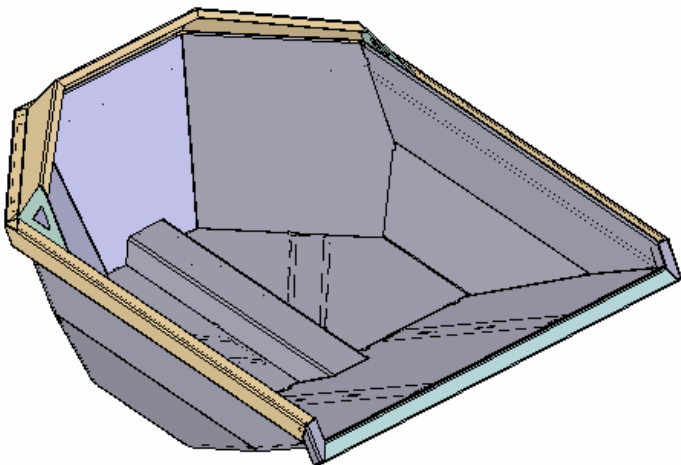


TURNING CIRCLE



External turning circle (m)	4,2
Internal turning circle (m)	2,4

HOPPER



CAPACITY	Water - 900 l
	Levelled - 1150 l
	Heaped - 1400 l
ROTARY TIPPING	180°



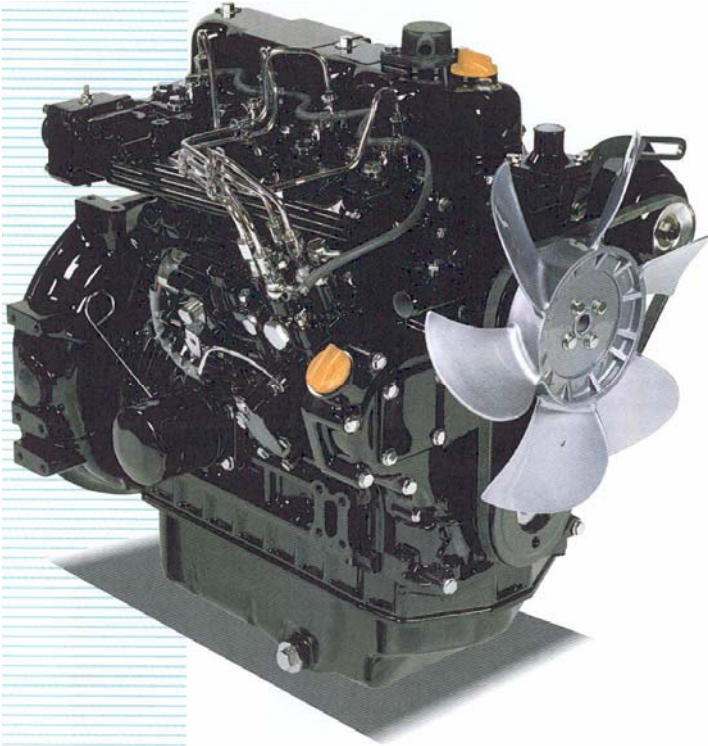
DUMPER GYRANTER 2.7

ROTARY TIPPING 180°



DIMENSIONS

3TNV88-DSA



YANMAR

- Noise reduction
- Emission reduction
- Direct injection
- Water cooled

DIESEL ENGINES
TNV

Number of cylinders	3
Combustion type	Direct injection
Compression ratio	19:1
Displacement (cc)	1642
Power (kW)	27,1 a 3000 rpm
Cooling system	Water
Torque (Nm)	99 – 107.9
Weight (kg)	138
Starting system	Electric



DUMPER GYRANTER 2.7

ROTARY TIPPING 180°



HYDROSTATIC PUMP



HP Hydraulic



The M4PV series variable-displacement pumps are swashplate type.

Features:

- high rotation speed
- reduced dimensions
- fitting for multiple pumps
- easy servicing
- built-in relief valves
- control flexibility: manual, automotive, electric, hydraulic, and proportional electronic servocontrols are available.

The reliability, quality, and durability of HP HYDRAULIC products are guaranteed thanks to the use of CAD systems for calculation and design, and computerised test benches for testing and tuning.

TECHNICAL DATA

Displacement	cm ³	28
Boost-pump displacement	cm ³	9
Max. pump speed	min ⁻¹	3600
Min. pump speed	min ⁻¹	500
Pressure rating	bar	250
Peak pressure	bar	350
Boost-pump pressure	bar	15 + 25
Max. housing pressure	bar	1,5
Max. oil continuous temperature	° C	80
ISO filtration class		18/16/13
Optimized oil viscosity	mm ² /s	15 + 35
Weight	Kg.	17.8
Inertial mass	N • m • s ²	19 x 10 ⁻⁴
Suction pressure bar absolute		> = 0.8
Cold starting pressure bar absolute		> = 0.5

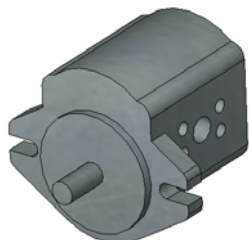


DUMPER GYRANTER 2.7

ROTARY TIPPING 180°



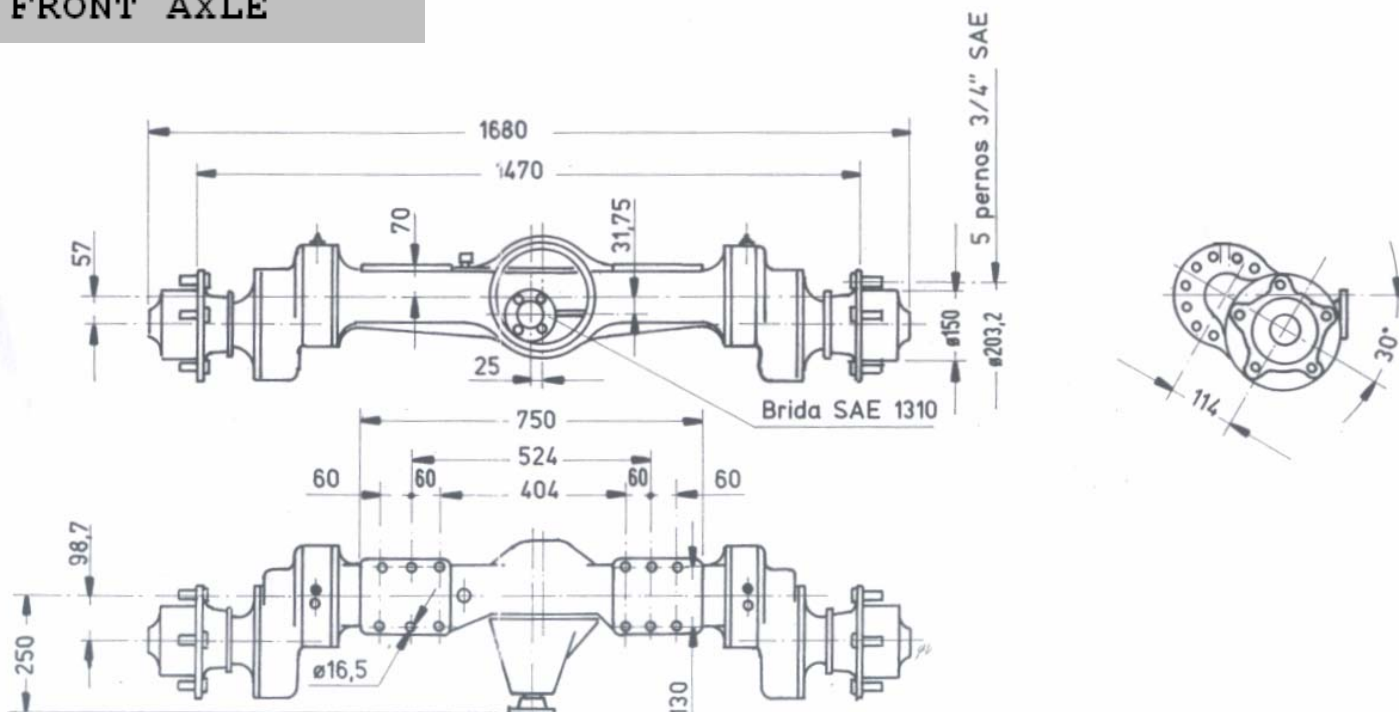
GEAR PUMP



DYNAMATIC TECHNOLOGIES LIMITED

Displacement	10,9 cc/rev
Max. pressure	200 bar
Peak pressure	250 bar
Min. rpm	650 rpm
Average rpm	2500 rpm
Max. rpm	3500 rpm

FRONT AXLE



Maximum input speed (rpm)	2500
Maximum input torque (Nm)	540
Braking torque (Nm)	2850
Maximum load (kg)	4400
Unladen weight (kg)	165
Track dimensions (mm)	1470

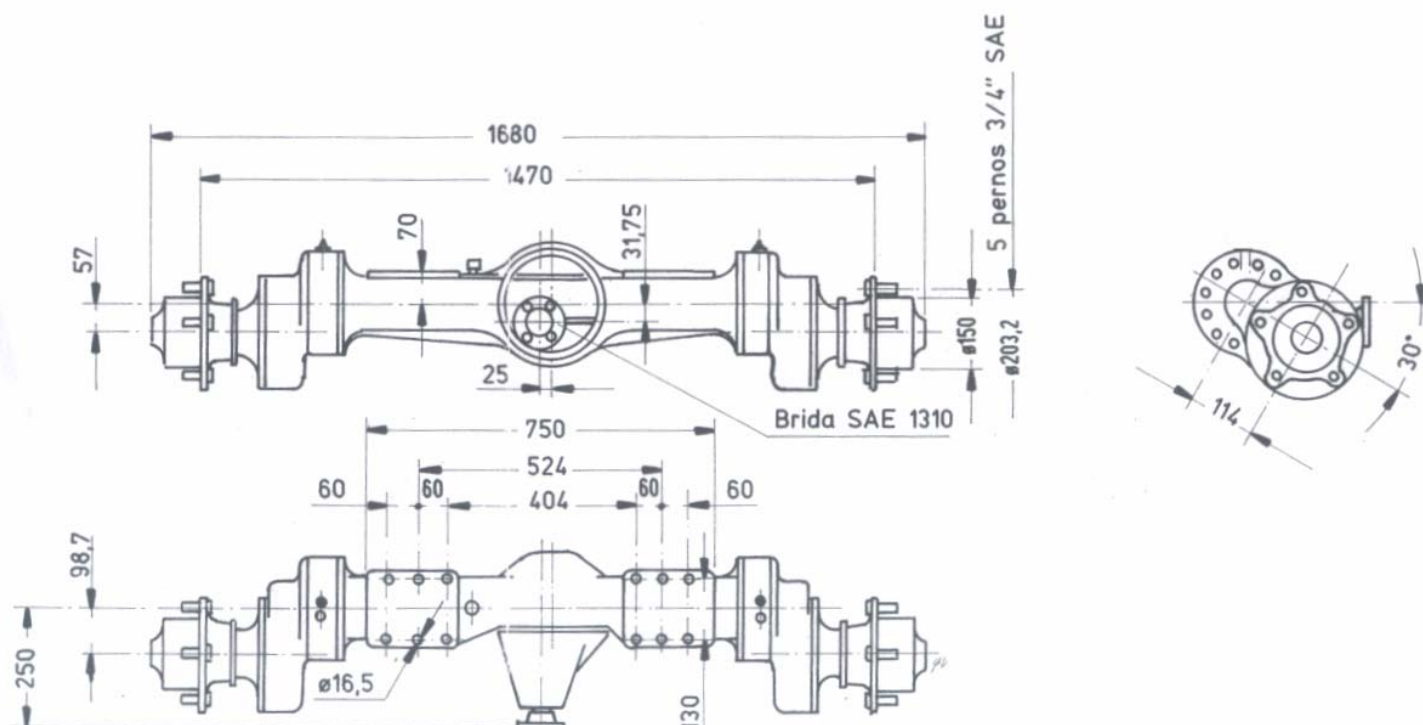


DUMPER GYRANTER 2.7

ROTARY TIPPING 180°



REAR AXLE



Maximum input speed (rpm)	2500
Maximum input torque (Nm)	540
Braking torque (Nm)	—
Maximum load (kg)	4400
Unladen weight (kg)	160
Track dimensions (mm)	1470



C/ Arnao, 15 - Polígono Industrial de Barres
 33794 - Castropol - Asturias
 España
 Tlf: 985 471 063
 Fax: 985 472 709
www.uromac.com