

**URUMAC**

# Gyranter 4x & 5000

## GYRANTER 4x / 5000

**ROTARY TIPPING 180° 4000 / 5000 kg**

- **Hydrostatic automotive 4x4 permanent**
- **Rotary tipping 180°**
- **Articulated chassis**

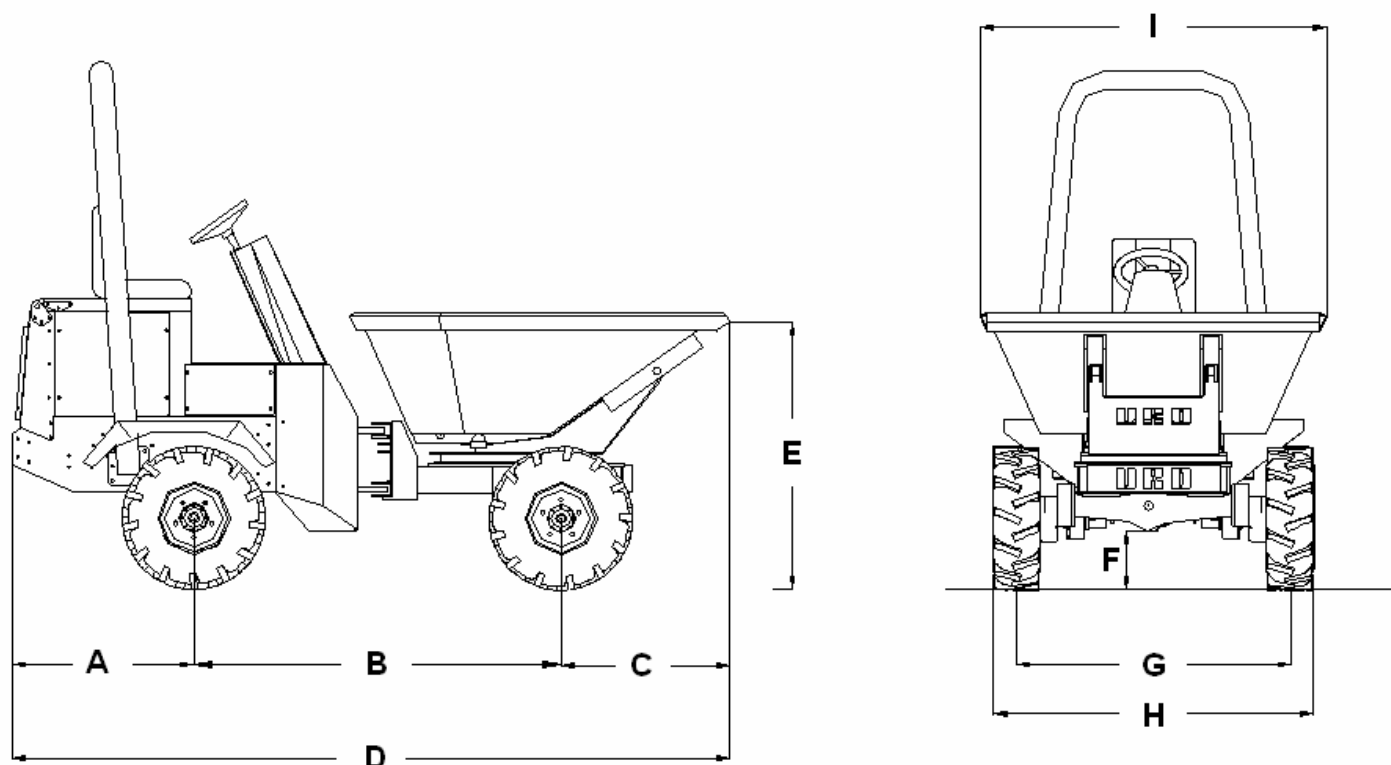
<b>Payload</b>	4000 / 5000 kg	
<b>Engine</b>	Deutz D2011L3i	
	35,8Kw / 49 cv	
<b>Cooling system</b>	Air / oil	
<b>Hydrostatic pump</b>	Linde	
<b>Hydrostatic engine</b>	Linde	
<b>Transmission</b>	Hydrostatic automotive 4x4 permanent	
<b>Brakes</b>	Oil immersed discs	
<b>Steering</b>	Hydraulic	
<b>Front wheels</b>	11.5 / 8 0 - 15.3	
<b>Rear wheels</b>	11.5 / 8 0 - 15.3	
<b>Unladen weight</b>	2720 kg	
<b>Max. speed</b>	18 km/h	
<b>Gradient negotiable</b>	Asphalt	43%
	earth	38%
<b>Oil tank</b>	50l	
<b>Diesel tank</b>	50l	

# GYRANTER 4x & 5000

ROTARY TIPPING 180°



## DIMENSIONS



A	1050
B	2020
C	926
D	4090
E	1440
F	300
G	1535
H	1800
I	1890

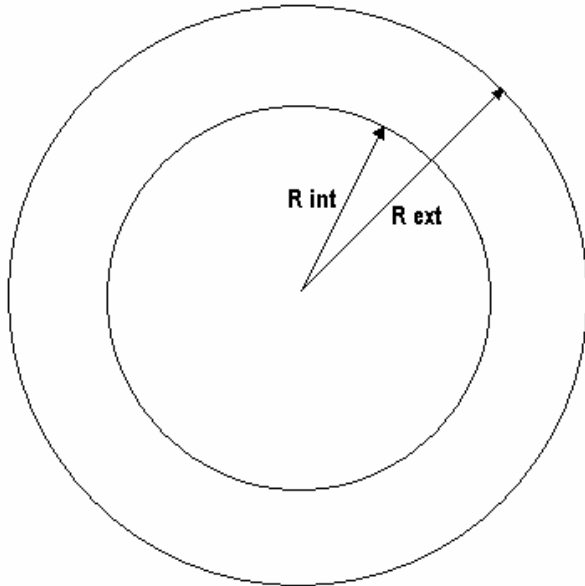


# GYRANTER 4x & 5000

ROTARY TIPPING 180°

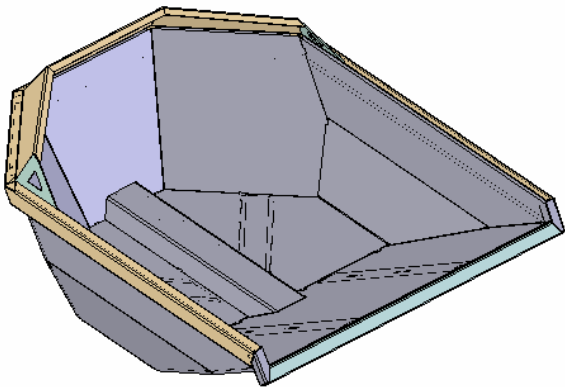


## TURNING CIRCLE



<b>External turning circle (m)</b>	<b>4,6</b>
<b>Internal turning circle (m)</b>	<b>2,7</b>

## HOPPER



<b>CAPACITY</b>	Water - 1320 l
	Levelled - 1820 l
	Heaped - 1400 l
<b>ROTARY TIPPING</b>	180°



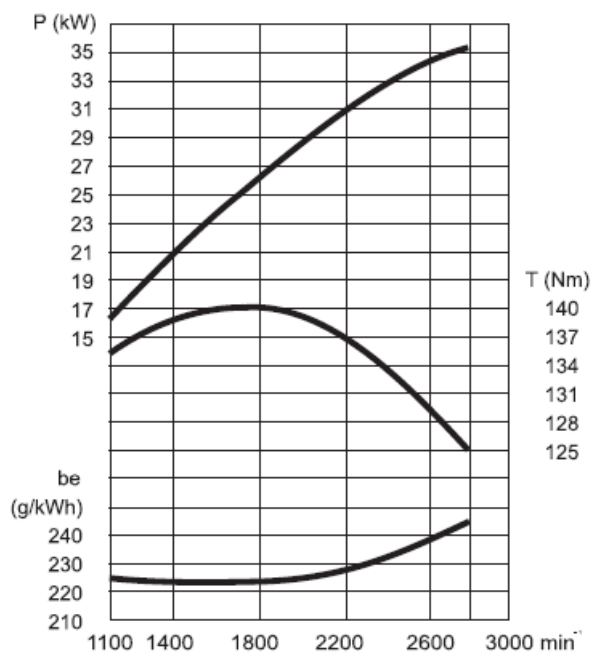
# GYRANTER 4x & 5000

## ROTARY TIPPING 180°



### ENGINE

## D2011L3i



Number of cylinder	3
--------------------	---

Bore/stroke	mm	94/112
Displacement	l	2.33
Compression ratio		18.5

Max. rated speed	rpm	2800
Mean piston speed	m/s	10.45

#### Power ratings for construction equipment engines <sup>1)</sup>

Power ratings for automotive- and industrial engines <sup>2)</sup>	kW	35.8
at speed	rpm	2800
Mean effective pressure	bar	6.58

Power ratings for cont. operation <sup>3)</sup>	kW	34.0
at speed	rpm	2800
Mean effective pressure	bar	6.25

Max. torque	Nm	137
at speed	rpm	1700

Minimum idle speed	rpm	900
--------------------	-----	-----

Specific fuel consumption <sup>4)</sup>	g/kWh	218
---	-------	-----

Weight to DIN 70020, Part 7A <sup>5)</sup>	kg	216
--	----	-----



# GYRANTER 4x & 5000

## ROTARY TIPPING 180°



HYDROSTATIC PUMP

*Linde*



<b>Displacement</b>	Nominal displacement (cm <sup>3</sup> / rev)	55
	Max. displacement (cm <sup>3</sup> / rev)	54.8
<b>Speed</b>	Max. continuous speed (rpm)	3300
	Max. alternative speed (rpm)	3700
<b>Pressure</b>	Max. continuous pressure (bar)	250
	Max. pressure of work (bar)	420
	Max. alternative pressure (bar)	500
<b>Torque</b>	Continuous input torque (Nm)	220
	Max. input torque (Nm)	350
<b>Power</b>	Continuous power (kW)	75
	Max. power (Kw)	121
<b>Weight</b>	Weight (Kg)	44

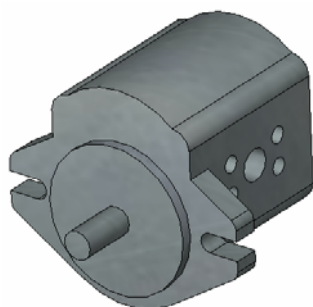


# GYRANTER 4x & 5000

## ROTARY TIPPING 180°

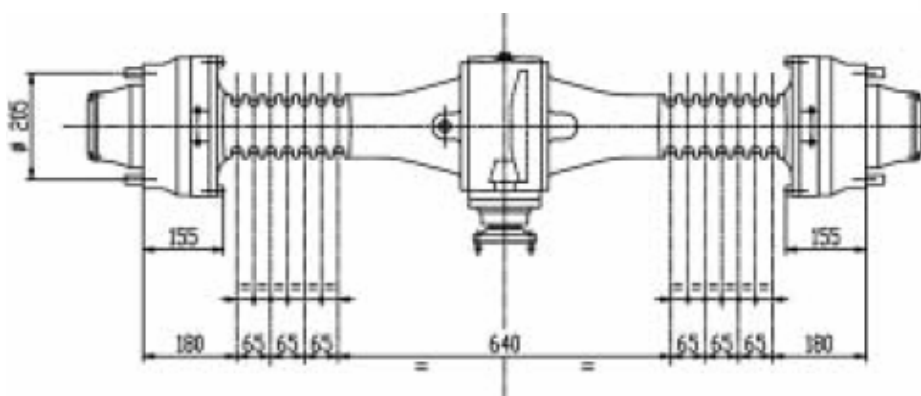


### GEAR PUMP



<b>Displacement</b>	10,9 cc/rev
<b>Max. pressure</b>	200 bar
<b>Peak pressure</b>	250 bar
<b>Min. rpm</b>	650 rpm
<b>Average rpm</b>	2500 rpm
<b>Max. rpm</b>	3500 rpm

### FRONT AND REAR AXLES



<b>Maximum estatic load (daN)</b>	12000
<b>Maximum dynamic load (daN)</b>	6600
<b>Maximum output torque (daN)</b>	2100
<b>Reduction ratio at differential</b>	3,25:1
<b>Reduction ratio at wheels</b>	4,8:1
<b>Total reduction ratio</b>	15,60:1
<b>Track dimension</b>	1595
<b>Service brakes type</b>	Oil immersed brake discs
<b>Wheel braking torque (daNm)</b>	610
<b>Service brake acting pressure (bar)</b>	40



C/ Arnao, 15 - Polígono Industrial de Barres  
 33794 - Castropol - Asturias  
 España  
 Tlf: 985 471 063  
 Fax: 985 472 709  
[www.uromac.com](http://www.uromac.com)