



- Hydrostatic automotive 4x4 permanent
- Self loading shovel
- Articulated Chasis
- Payload 2500 Kg

DUMPER VH-2500**HYDROSTATIC TRANSMISSION**

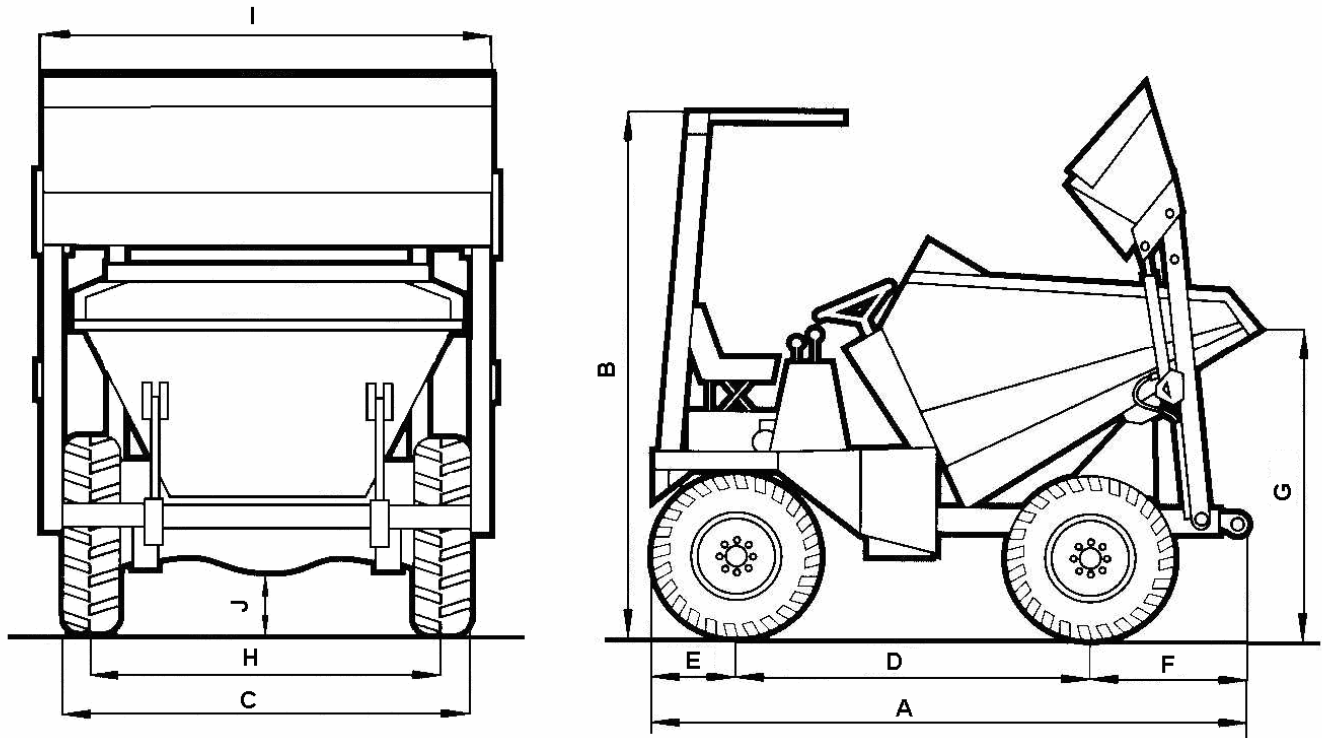
Type	Site dumper rotary tipping 180°
Payload	2500 kg
Engine	Yanmar 3TNV88-DSA
	Water cooled
	27,1 kW / 36,8 cv
Transmission	Hydrostatic automotive 4x4 permanent
Hydrostatic pump	HP hydraulic
Hydrostatic engine	HP hydraulic
Brakes	Hydraulic.Oil inmersed discs
Steering	Hydraulic
Front wheels	10.0 / 75 - 15.3
Rear wheels	10.0 / 75 - 15.3
Unladen weight	2300 kg
Speed (Max.)	18 km/h
Internal turning circle	2.4 m
External turning circle	4.2 m
Self loading shovel capacity	220 l

DUMPER VH-2500

THE 4WD DUMPOWER



DIMENSIONS



A	3450mm
B	2500mm
C	1740mm
D	1875 mm
E	1000mm
F	540mm
G	1360mm
H	1485mm
I	1855mm

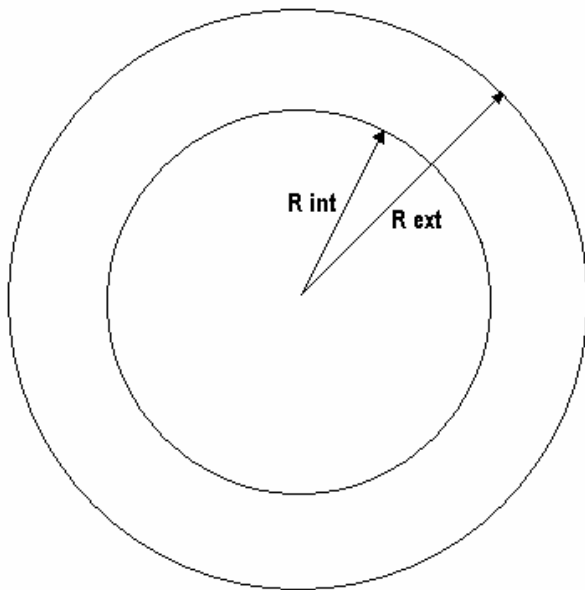


DUMPER VH-2500

THE 4WD DUMPOWER

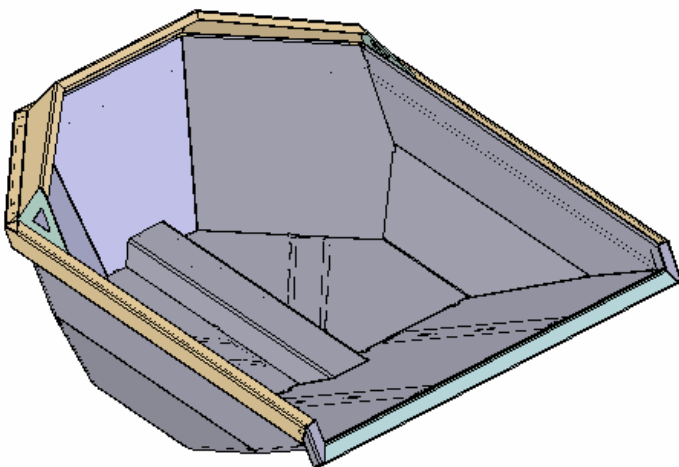


TURNING CIRCLE



External turning circle (m)	4,2
Internal turning circle (m)	2,4

HOPPER



CAPACITY	Water - 1250 l
	Levelled - 1500 l
	Heaped - 1700 l



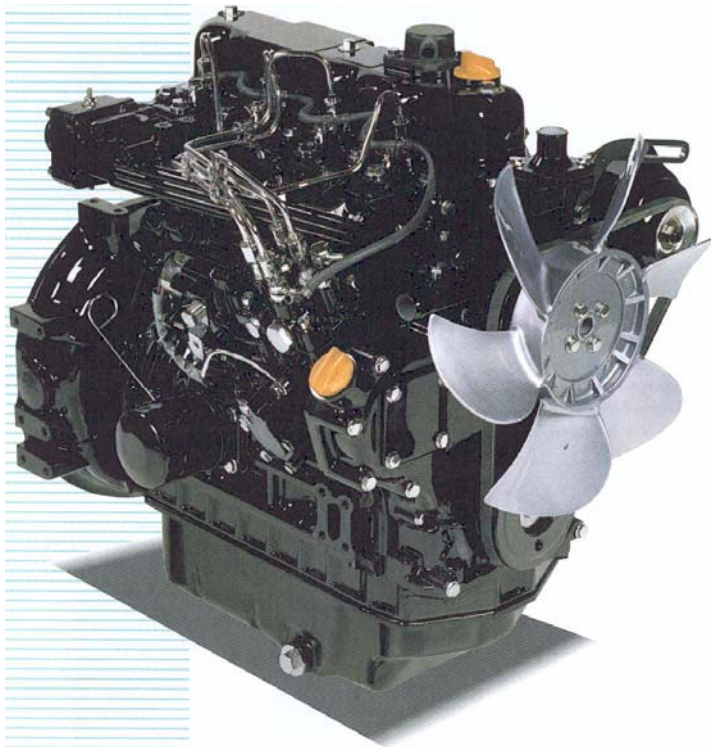
DUMPER VH-2500

THE 4WD DUMPOWER



ENGINE

3TNV88-DSA



YANMAR

- Noise reduction
- Emission reduction
- Direct injection
- Water cooled

DIESEL ENGINES
TNV

Number of cylinders	3
Combustion type	Direct injection
Compression ratio	19:1
Displacement (cc)	1642
Power (kW)	27,1 a 3000 rpm
Cooling system	Water
Torque (Nm)	99 – 107.9
Weight (kg)	138
Starting system	Electric



UROMAC reserves the right to make any changes in the specifications without prior notice

DUMPER VH-2500

THE 4WD DUMPOWER



HYDROSTATIC PUMP



HP Hydraulic



The M4PV series variable-displacement pumps are swashplate type.

Features:

- high rotation speed
- reduced dimensions
- fitting for multiple pumps
- easy servicing
- built-in relief valves
- control flexibility: manual, automotive, electric, hydraulic, and proportional electronic servocontrols are available.

The reliability, quality, and durability of HP HYDRAULIC products are guaranteed thanks to the use of CAD systems for calculation and design, and computerised test benches for testing and tuning.

TECHNICAL DATA

Displacement	cm ³	28
Boost-pump displacement	cm ³	9
Max. pump speed	min ⁻¹	3600
Min. pump speed	min ⁻¹	500
Pressure rating	bar	250
Peak pressure	bar	350
Boost-pump pressure	bar	15 + 25
Max. housing pressure	bar	1,5
Max. oil continuous temperature	° C	80
ISO filtration class		18/16/13
Optimized oil viscosity	mm ² /s	15 + 35
Weight	Kg.	17.8
Inertial mass	N • m • s ²	19 x 10 ⁻⁴
Suction pressure bar absolute		> = 0.8
Cold starting pressure bar absolute		> = 0.5

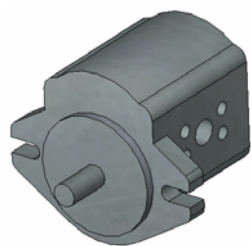


DUMPER VH-2500

THE 4WD DUMPOWER

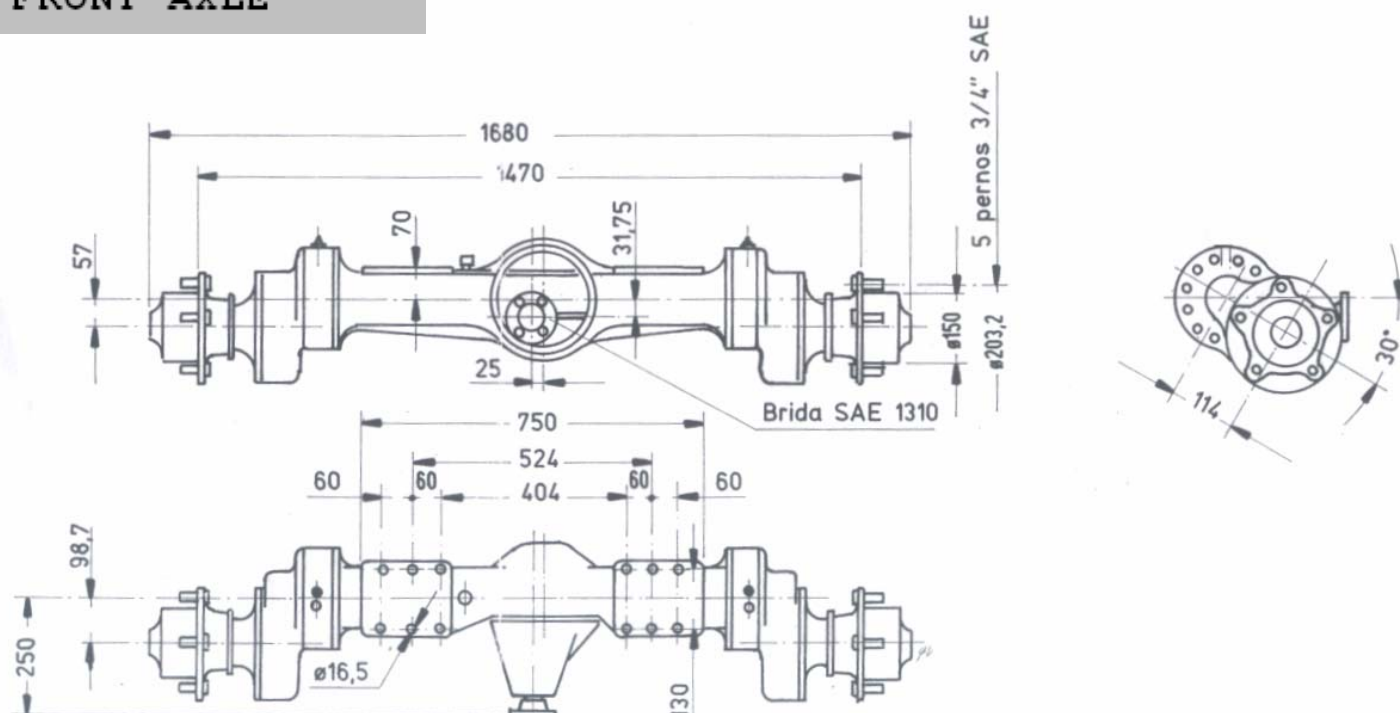


GEAR PUMP



Displacement	10,9 cc/rev
Max. pressure	200 bar
Peak pressure	250 bar
Min. rpm	650 rpm
Average rpm	2500 rpm
Max. rpm	3500 rpm

FRONT AXLE



Maximum input speed (rpm)	2500
Maximum input torque (Nm)	540
Braking torque (Nm)	2850
Maximum load (kg)	4400
Unladen weight (kg)	165
Track dimensions (mm)	1470

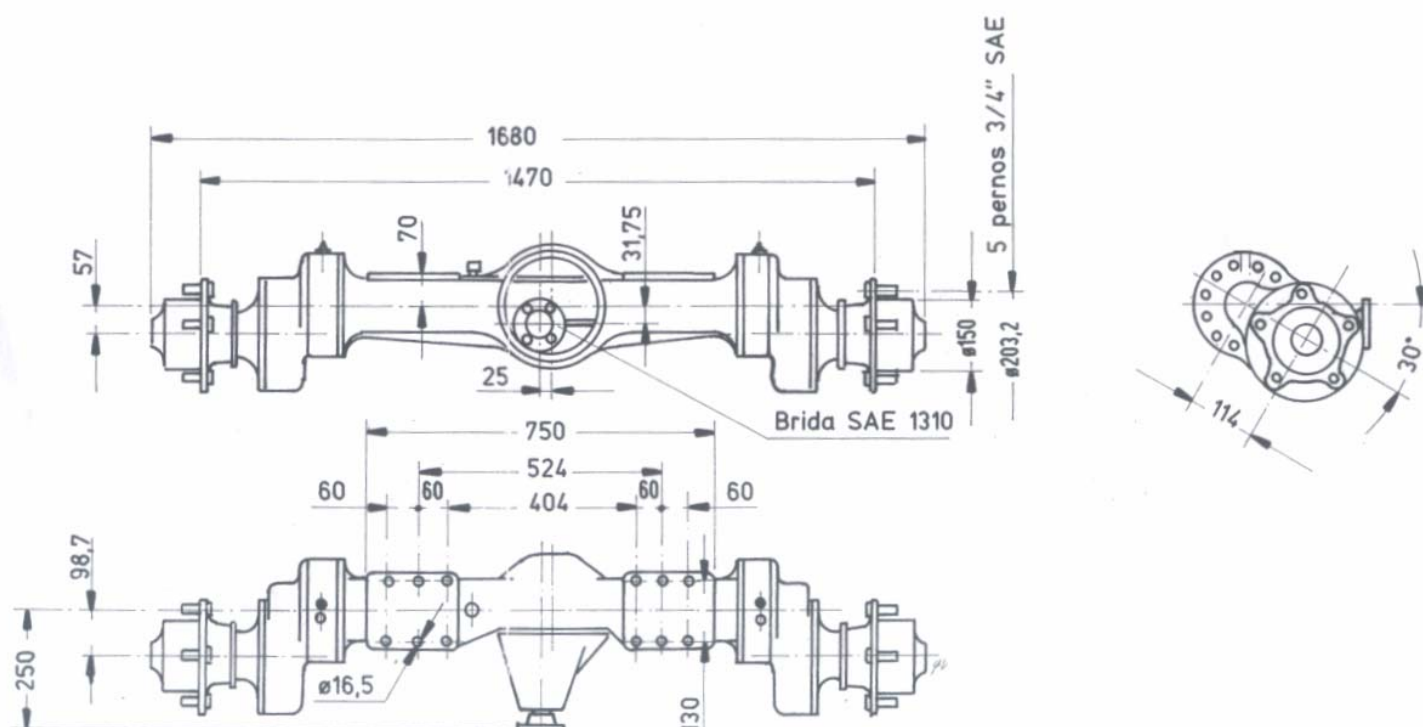


DUMPER VH-2500

THE 4WD DUMPOWER



REAR AXLE



Maximum input speed (rpm)	2500
Maximum input torque (Nm)	540
Braking torque (Nm)	—
Maximum load (kg)	4400
Unladen weight (kg)	160
Track dimensions (mm)	1470



C/ Arnao, 15 - Polígono Industrial de Barres
33794 - Castropol - Asturias
España
Tlf: 985 471 063
Fax: 985 472 709
www.uromac.com