

DUMPER VK-2000

MECHANICAL STURDINESS & SIMPLE CONSTRUCTION



- **Hydrostatic system**
- **Mechanical sturdiness**
- **Simple construction**
- **Payload 2000 Kg**

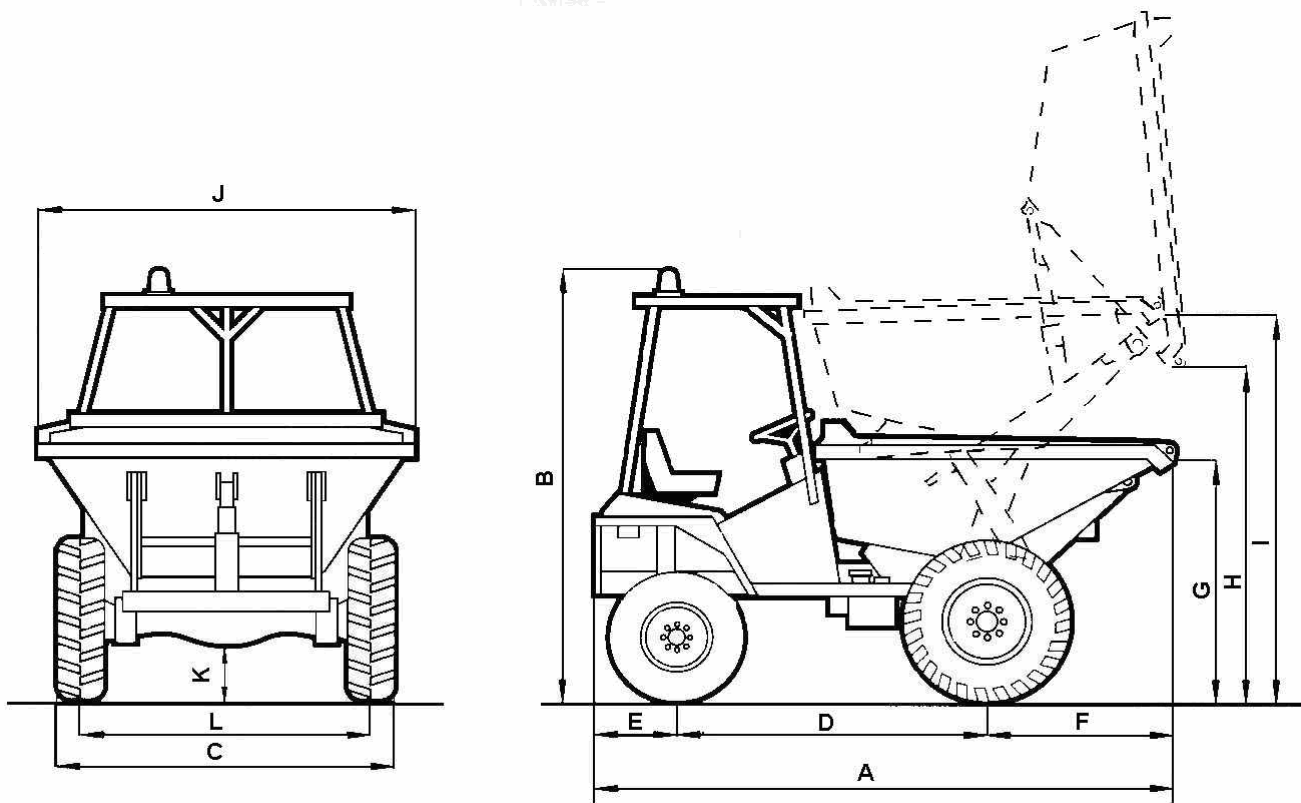
Payload	2000 kg
Engine	Yanmar 3TNE74-Yc
	Water cooled
	16,6 kW a 3000 rpm
Transmission	Hydrostatic
Brakes	Mechanically operated in both
Steering	Hydraulic
Front wheels	10.0 / 75 - 15.3
Rear wheels	7.00-12
Unladen weight	1500 kg
Speed (Max.)	18 km/h
Internal turning circle	2.4 m
External turning circle	4,1 m
Gradient negotiable	54 % asphalt / 45 % earth

DUMPER VK-2000

MECHANICAL STURDINESS & SIMPLE CONSTRUCTION



DIMENSIONS



A	2857mm
B	2240mm
C	1480mm
D	1557mm
E	500mm
F	8000mm
G	Con tijera 1470mm Sin tijera 1235mm
H	1970mm
I	2100mm
J	1585mm
K	285mm
L	1221mm

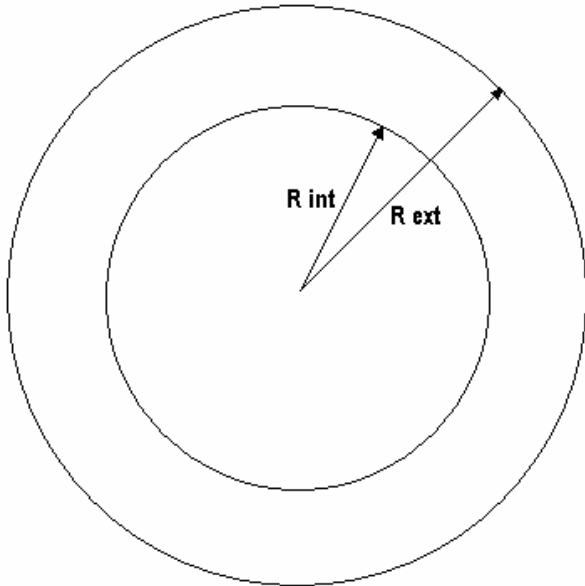


DUMPER VK-2000

MECHANICAL STURDINESS & SIMPLE CONSTRUCTION

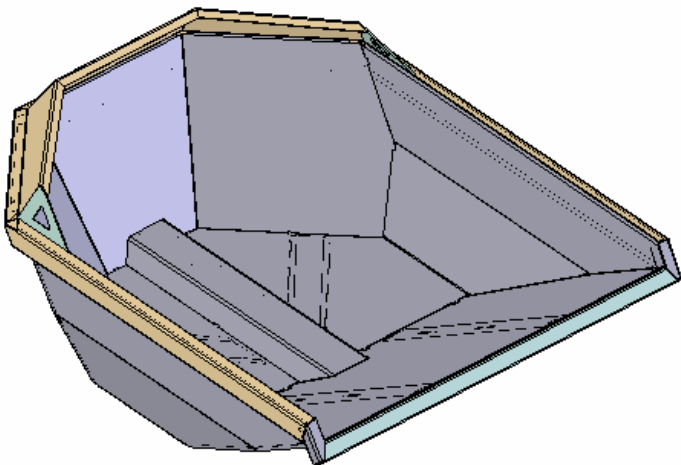


TURNING CIRCLE



External turning circle (m)	4,1
Internal turning circle (m)	2,4

HOPPER



CAPACITY	Water - 1010 l
	Levelled - 1275 l
	Heaped - 1500 l



DUMPER VK-2000

MECHANICAL STURDINESS & SIMPLE CONSTRUCTION



ENGINE

3TNE74-Yc

YANMAR



- Noise reduction
- Emission reduction
- Direct injection
- Water cooled

Number of cylinders	3
Displacement (cc)	1,006
Power (kW)	16,6 a 3000 rpm
Cooling system	Water
Weight (kg)	85/100
Starting system	Electric



DUMPER VK-2000

MECHANICAL STURDINESS & SIMPLE CONSTRUCTION



HYDROSTATIC PUMP



HP Hydraulic



The M4PV series variable-displacement pumps are swashplate type.

Features:

- high rotation speed
- reduced dimensions
- fitting for multiple pumps
- easy servicing
- built-in relief valves
- control flexibility: manual, automotive, electric, hydraulic, and proportional electronic servocontrols are available.

The reliability, quality, and durability of HP HYDRAULIC products are guaranteed thanks to the use of CAD systems for calculation and design, and computerised test benches for testing and tuning.

TECHNICAL DATA

Displacement	cm ³	28
Boost-pump displacement	cm ³	9
Max. pump speed	min ⁻¹	3600
Min. pump speed	min ⁻¹	500
Pressure rating	bar	250
Peak pressure	bar	350
Boost-pump pressure	bar	15 + 25
Max. housing pressure	bar	1,5
Max. oil continuous temperature	° C	80
ISO filtration class		18/16/13
Optimized oil viscosity	mm ² /s	15 + 35
Weight	Kg.	17.8
Inertial mass	N • m • s ²	19 x 10 ⁻⁴
Suction pressure bar absolute		> = 0.8
Cold starting pressure bar absolute		> = 0.5

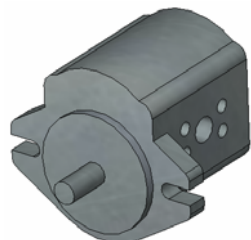


DUMPER VK-2000

MECHANICAL STURDINESS & SIMPLE CONSTRUCTION



GEAR PUMP



Displacement	6,1 cc/rev
Max. pressure	200 bar
Peak pressure	250 bar
Min. rpm	650 rpm
Average rpm	2500 rpm
Max. rpm	3500 rpm



C/ Arnao, 15 - Polígono Industrial de Barres
33794 - Castropol - Asturias
España
Tlf: 985 471 063
Fax: 985 472 709
www.uromac.com

UROMAC reserves the right to make any changes in the specifications without prior notice